

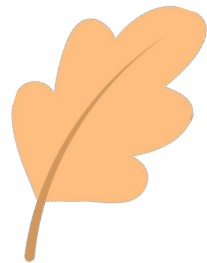
# Creative Offsets Welcome Pack



# Hello & welcome



# *Ecologi*



## Contents

Who are Ecologi?.....	06
Your profile set up.....	08
Purchasing and evidencing your impact.....	10
The impact you'll be funding.....	15
Workshops.....	20



**Thank you for setting up your  
profile with Ecologi - in partnership with  
albert's Creative Offsets scheme**



Let's go, who are we?

## Who are Ecologi?

We support businesses on their net-zero journey, and fund the world's leading climate solutions.

- Ecologi are a B Corp certified social enterprise platform for climate action
- Working with 20,000+ businesses including AXA, BBC, Lloyds Bank, Vodafone and BAFTA
- Over 100 climate projects supported, funded over 2.7 million tonnes of CO<sub>2</sub>e reductions, and funded the planting of 75+ million trees.



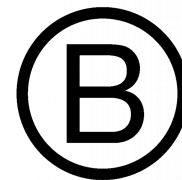
**75+**  
**million**  
trees funded



**100+**  
**projects**  
**funded**

certified to the  
leading standards

**Certified**



**Corporation**

★ **Trustpilot**




**4.9 | 500+ reviews**

# Your profile set up

don't worry it's super easy!

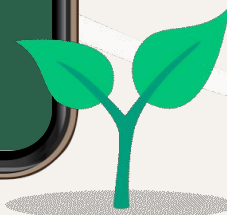
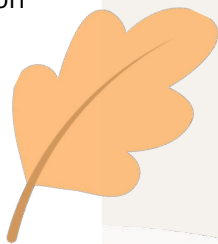


## Setting up your profile

1. Create Ecologi profile linked to the albert scheme [here](#).
2. Fill in the business form with your production company details.
3. Select **Create account** 

### Please note:

- It's important to sign up via this method rather than Ecologi's other business profiles, as this will link your profile to the overall albert [profile](#).
- We advise using a generic email address such as 'admin@' so that your login can be shared amongst your team.
- For guidance on account actions and customisations, please visit our [Knowledge base](#)

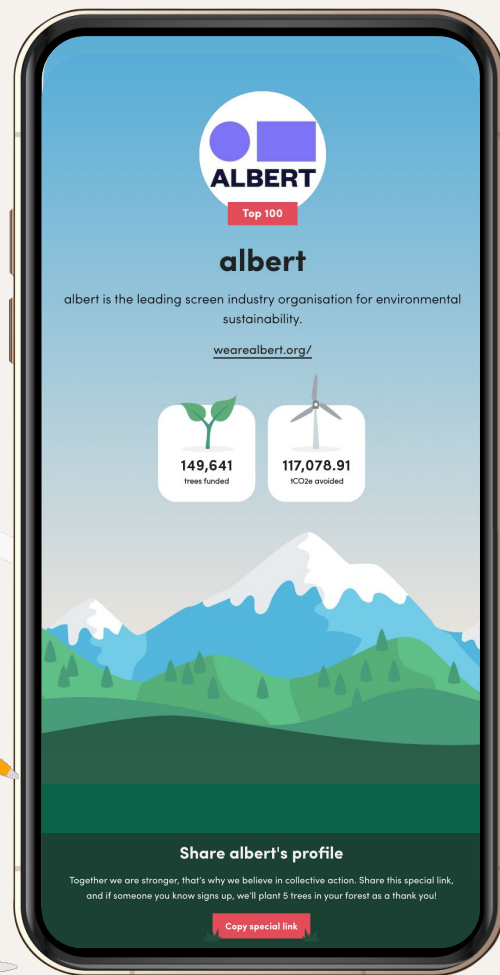
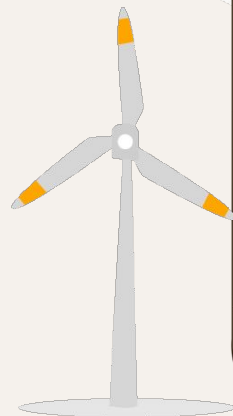




## The albert profile

albert has an overview profile, where the cumulative impact from all production companies can be seen together in one place. The profile will act as “albert’s portfolio account.”

As a production company, all you need to do is set up a profile via the guide detailed in the previous slide, and this will link the albert profile.



# Purchasing and evidencing your impact

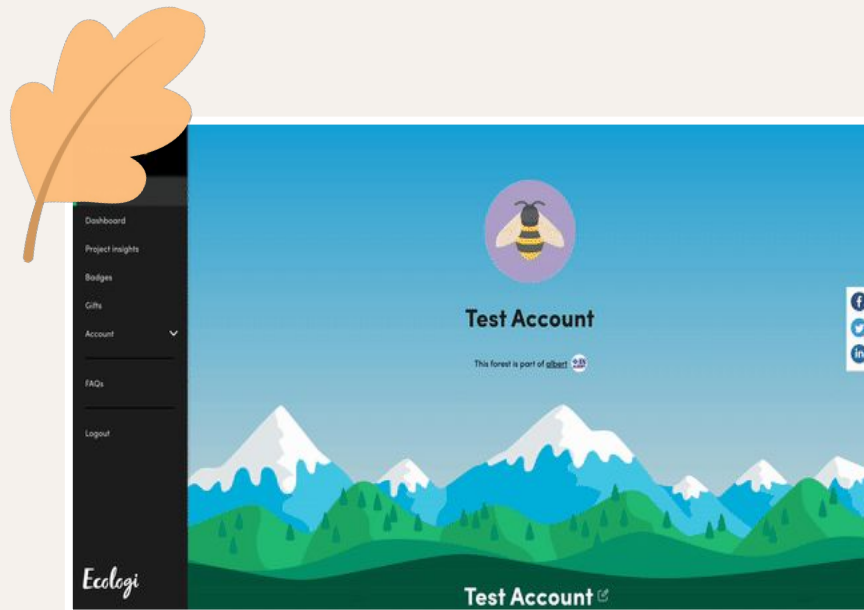


## Via our Card payment portal

If you'd like to pay via our card payment portal, you can do this by following the instructions below:

1. Visit your Ecologi profile and select '**Request impact**'
2. Enter the quantity (in tonnes) of CO2e that you would like to purchase and press '**Calculate**'
3. Check the price is what you expected and then press '**Pay via Stripe**'
4. This will take you to our card payment portal which will ask you to enter your card details

Once you have paid, we'll add your carbon avoidance credits to your profile within one working day.



## Via invoice payment (minimum purchase amount of £500)

If you'd like to make this payment via invoice, please reach out to **albertoffsets@ecologi.com** with the following details:

- How many **tonnes of CO2e** you're looking to offset?
- Your full **company name** and **billing address**
- Whether you'd like to pay this invoice by **BACs** payment or by **card**.
- The **email** linked to your Ecologi profile

With these details, our Finance team will raise and send you an invoice. Then your carbon avoidance credits will be added within 2 working days of us receiving the payment.



## Carbon Action Plan - Evidence

Once you've purchased impact, you'll need to upload proof of payment to your carbon action plan. This can be in the form of a **receipt**, an **invoice** or an Ecologi **impact certificate**.

To create an impact certificate, please follow the instructions below:

- Log in to your Ecologi profile and select **Account** on the left-hand toolbar
- Using the drop-down menu, select **Certificates**
- Once your carbon avoidance credits have been added, on this page you'll see a **Generate new certificate** button, select this.
- After a moment or two, refresh this page and you'll see that you're able to download a PDF copy of your certificate.

For any queries relating to your carbon action plan or albert account, please email through to [albert@bafta.com](mailto:albert@bafta.com)



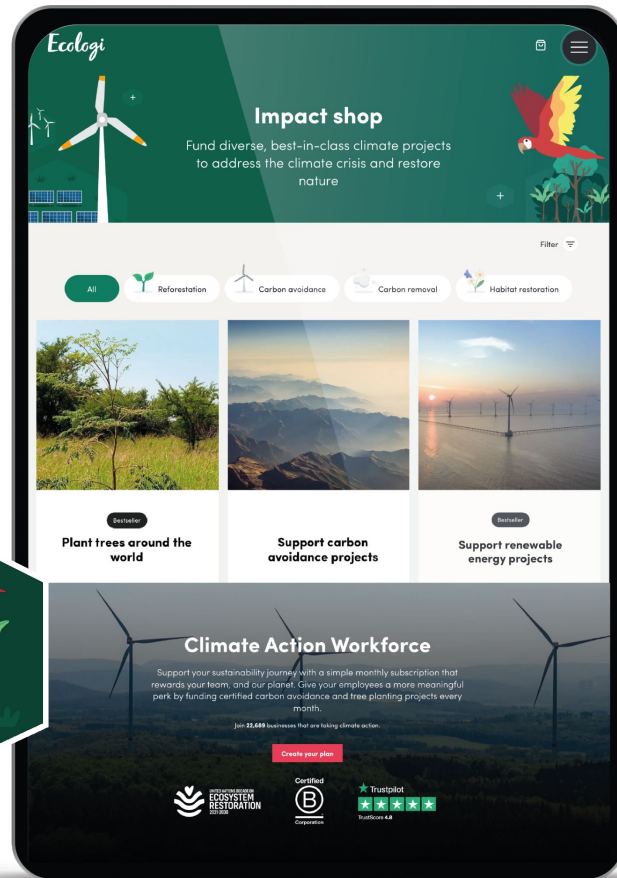
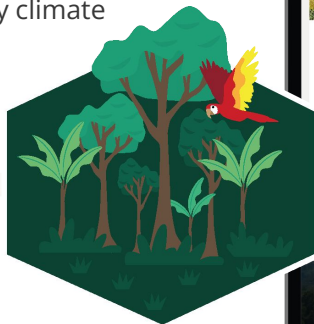
# See what else Ecologi has on offer

With Ecologi, you can also support a range of carbon avoidance projects within our **Impact shop**, plus reforestation projects, in addition to your albert offsetting.

## Impact Shop

You can also chose to make your production company a **Climate Action Workforce®**, funding high quality climate action through a monthly subscription.

## Climate Action Workforce





# The impact you'll be funding

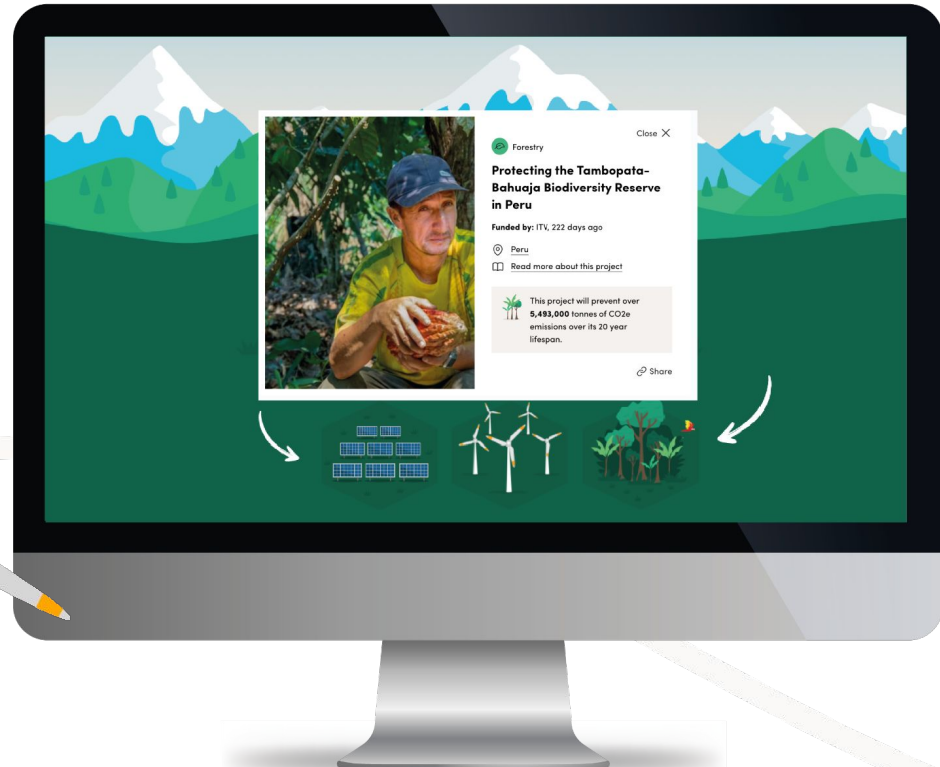


# Your impact, brought to life

Traditionally, climate impact providers issue you with a certificate for your purchase, but we feel there's so much more to the story.

We like to visualise the amazing projects, helping to bring your positive impact to life.

It feels good to look back over the months and see your impact building up.



# Fund high-quality projects

For the Creative Offsets scheme, albert have specifically selected a range of projects. Here's some of the projects currently supported through Creative Offsets with Ecologi:

Current projects:

Manoa:

<https://ecologi.com/projects/conserving-the-amazon-in-brazil>

Ouarzazate Solar PV:

<https://ecologi.com/projects/morocco-solar>

Please note that projects are subject to availability





## See Your Impact

Watch your impact come to life in your own virtual forest and visualise your carbon credits.

If you want to do more you can name forests after your production company as well as support other [impact projects](#)



## Automatic Impact

Use our [APIs](#) to report your carbon offsetting. This will allow you to display the amount you have offset directly on your own website.

More about [our integrations](#)



## Share your Achievements

Earn badges for achievements and share your impact with colleagues, clients and customers.

# Workshops



## Creative Workshops

Monthly workshops will be held by a member of the team for production companies to drop into, details of the workshop will be shared with you by email once you have signed up with Ecologi, join a workshop [here](#). The workshops will:

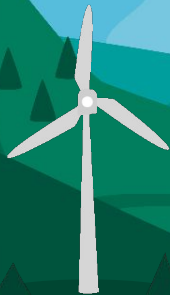
- Cover a range of topics including sustainability in the workplace, diet, energy usage and simple ways you can help tackle climate change.
- Give the production companies ideas on how they can continue to reduce emissions alongside easy to action tips.
- Include a variety of content for each workshop including a Q&A drop in session too.



## Why we do what we do



# Thank you



We're here if you have any questions:

Carbon action plan queries - [albert@bafta.org](mailto:albert@bafta.org)

Ecologi queries - [albertoffsets@ecologi.com](mailto:albertoffsets@ecologi.com)

[linda.adams@ecologi.com](mailto:linda.adams@ecologi.com)

[sean@ecologi.com](mailto:sean@ecologi.com)